

# Cal. SUPER 2035

Basic analogue quartz watch movement

## 1. Basic Specification

<b>Calibre</b>	<b>SUPER 2035</b>
<b>Ligne</b>	<b>6-3/4x8'''</b>
<b>Total height</b>	<b>3.15mm</b>
<b>Hands</b>	<b>3</b>
<b>Battery life</b>	<b>4 Years</b>

**< Time Standard >**

**Type of quartz:** Tuning fork type quartz crystal  
**Frequency :** 32,768Hz  
**Accuracy :** ±15 second / month worn under normal circumstances

**< Battery >**

**Type of battery:** Silver oxide SR626SW or equivalent

**< Others >**

**Driving system:** Two-pole stepping motor  
**Jewel :** No jewels

**< Additional Mechanisms >**

Second hand stopping at optional position  
 Powercell saving reset mechanism  
 Over-loading compensation device

**< Balanceable weight of hand >**

Minute hand Max. 0.4 μN.m  
 Second hand Max. 0.07 μN.m

## 2. Separated Parts

<b>Calibre</b>	<b>SUPER 2035</b>
<b>Setting stem</b>	<b>065-468</b>

## 3. Remarks

**< Setting stem >**

Length of movement center to stem end : 20.0mm  
 Thread : Φ0.9mm x 12.38mm

**< Measurement of time >**

The unit time of measurement must be set at "10s" or integer fold value of 10s owing to the DFC system. And the measurement must be carried out in state of a complete watch.

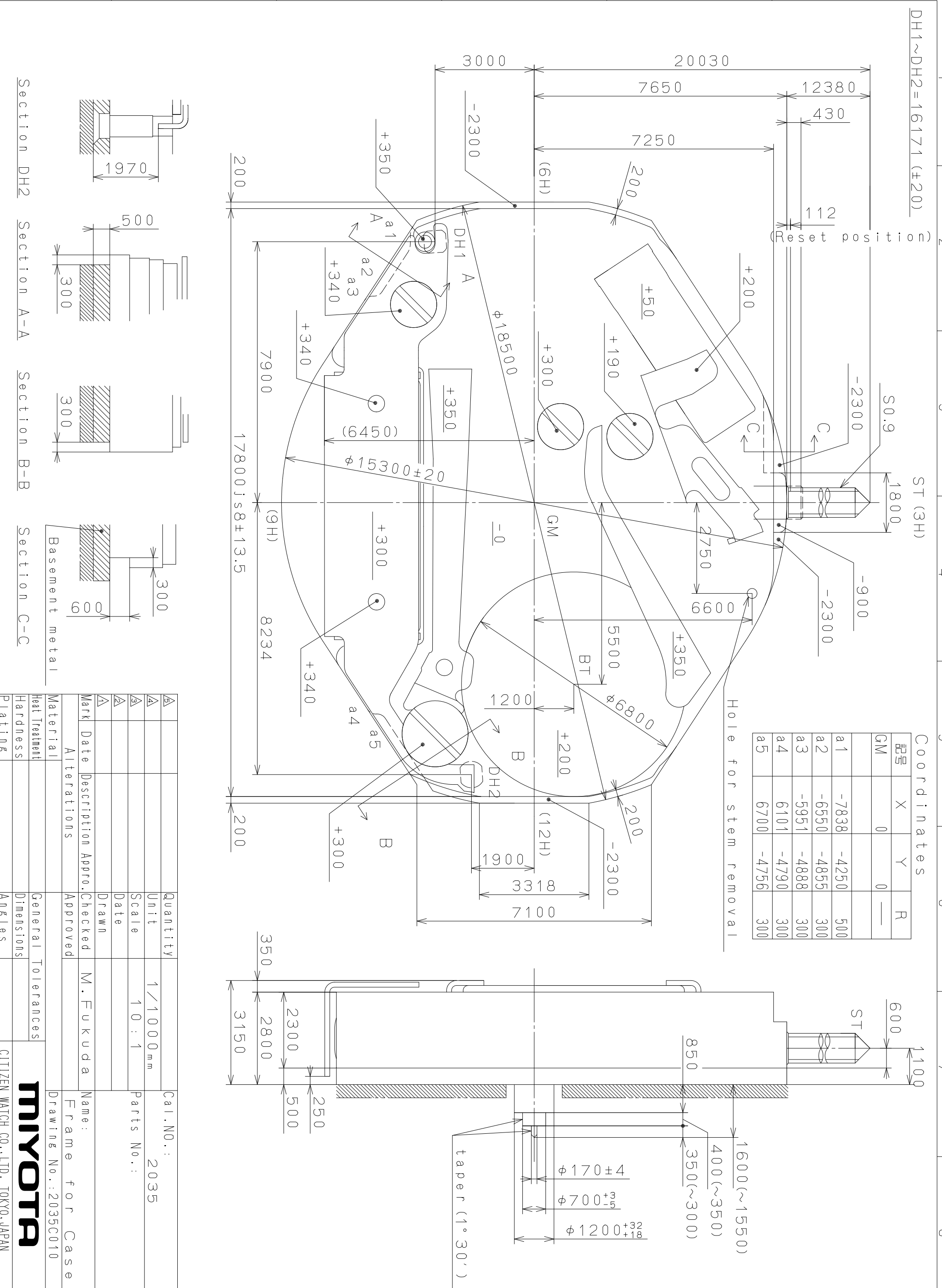
**< Marking on movement >**

NO (0) JEWELS  
 SUPER 2035  
 MIYOTA CO.,  
 JAPAN MADE

**< Typical clearance >**

Between case and movement  
 Battery strap - Case back : 150 - 300 μ m  
 Hands - glass : 300 - 450 μ m  
 Depending on Hand length.

**These specifications might be changed without prior notice.**

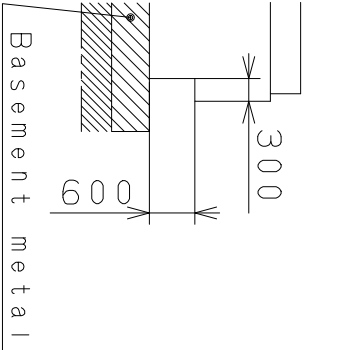
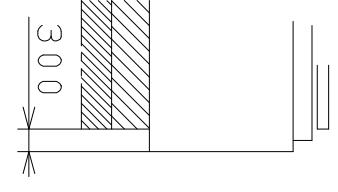
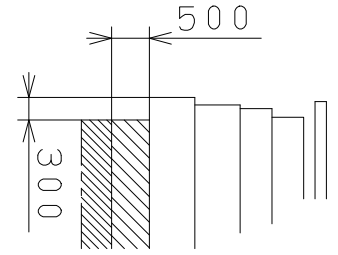
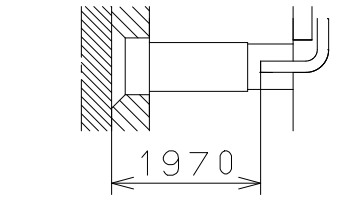


Section DH2

Section A-A

Section B-B

Section C-C

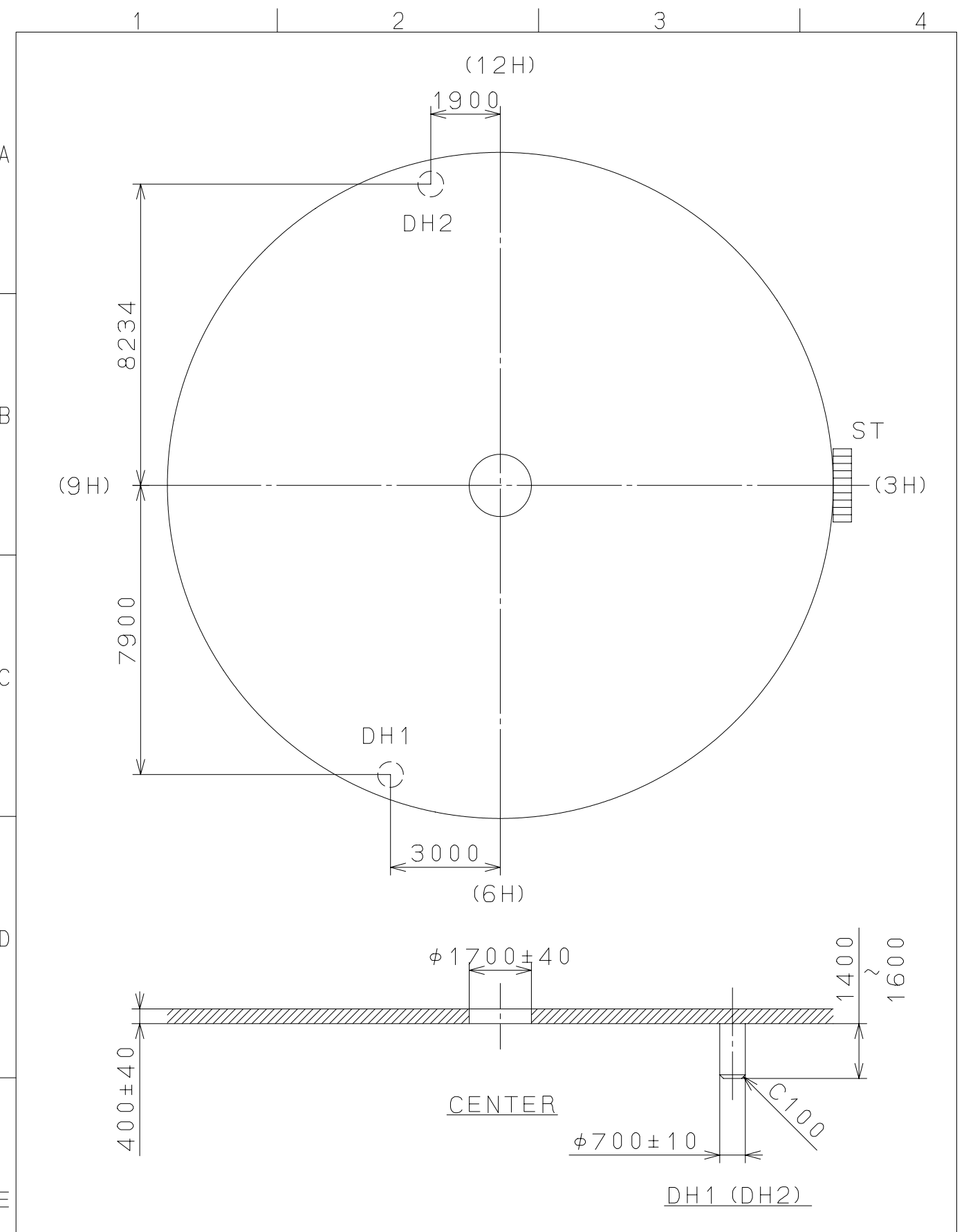


Material	Alterations	Quantity	Unit	Cal. NO.:
Heat Treatment	Date	1	1/1000 mm	2035
Hardness	Description	Scale	10:1	Parts No.:
Plating	Appr.	Checked	Drawn	
	Approved	M. Fukuda		Name:
				Frame for Case
				Drawing No.: 2035C010
				General Tolerances
				Dimensions
				Angles

**MIYOTA**  
CITIZEN WATCH CO., LTD. TOKYO, JAPAN

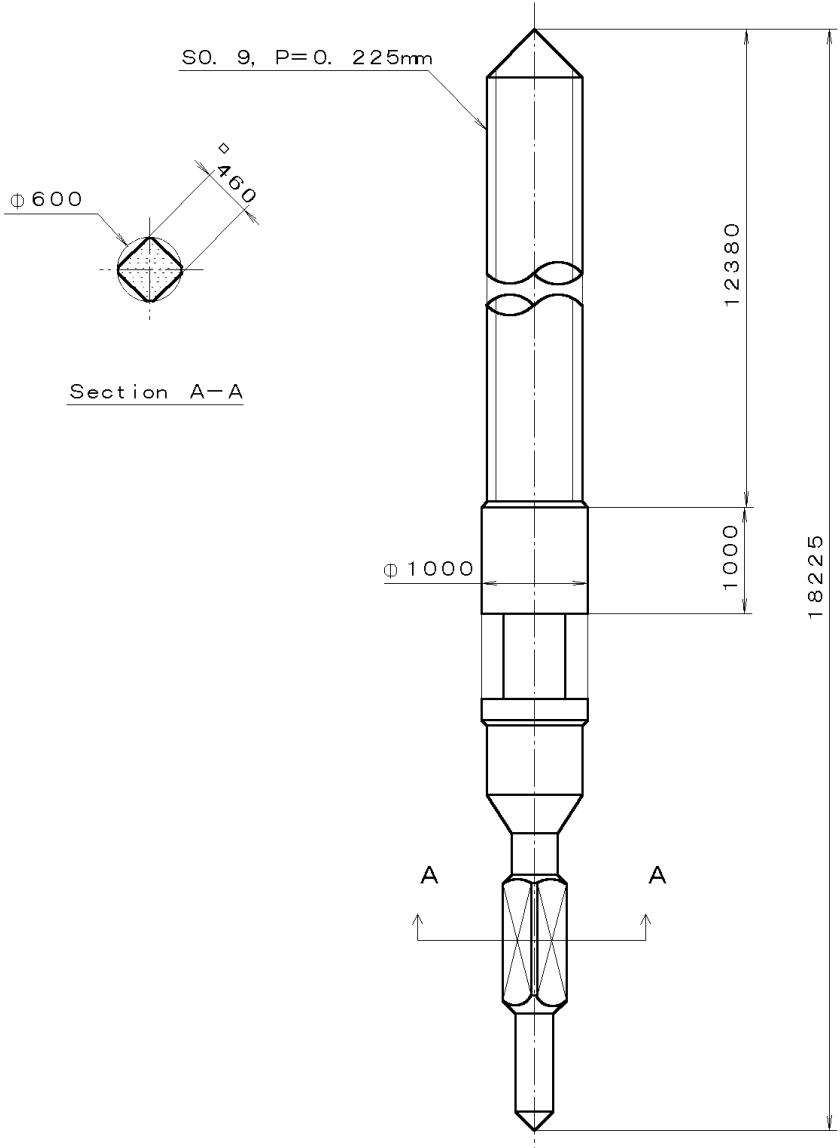
2005/08/19 (10:22:51)

This drawing is provisional and subject to our reconfirmation and/or revision without notice.



△			Quantity		Cal.NO.: SUPER2035
△			Unit	1 / 1000 mm	
△			Scale	7 / 1	Parts No.:
△			Drawn	Date	Name
△			Checked	M. Fukuda	Name:
		Alterations	Approved		Indications for Dial
		Material			Drawing No.: 2035D001
		Heat Treatment	General Tolerances	MIYOTA	
		Hardness	Dimensions		
		Plating	Angles		

This drawing is provisional and subject to our reconfirmation and/or revision without notice



\*\*\* T.P.W. 065-468 (01) \*\*\* (S100 1121) 00-07-28

△			Quantity		Cal. No. :
△			Unit	1/1000 mm	Parts:
△			Scale	20:1	
△			Date		065-468
△			Drawn		
△			Checked	T. Hiruta	Name:
△			Approved		SETTING STEM
Material			General Tolerances		Drawing No. : 4680S000
Heat Treatment			Dimensions	<b>CITIZEN</b> WATCH CO.,LTD. TOKYO, JAPAN	
Hardness			Angles		
Plating					